

Global Leader in Analytical BI for Impactful Decisions and Winning Outcomes

Classification and regression

Design of experiments

Dynamic data visualization

Life data analysis

SnapStats

SnapStats provide a quick way to produce a single page of preformatted output. They are available for many commonly used statistical analyses.

StatAdvisor

The StatAdvisor generates a paragraph or two interpreting each table in your output. It explains the significance of your results in simple terms, yet precisely enough that the interpretations may be included in your reports.

StatFolios

The StatFolio is the main Statgraphics document that records the state of your session, including a link to your data and all procedures and options that you have selected. StatFolios may be saved and recalled at a later date, or applied to multiple data sets.

StatGallery

The StatGallery lets you take graphs generated in different procedures and arrange them side by side on a single page. You may also overlay one graph on top of another.

Dashboard

Automatically generates alerts when data exceed established limits.

Monte Carlo simulation

Predictive analytics

Quality assurance and SPC

Time series analysis

StatLink

StatLink lets you link a StatFolio to one or more data sources. When the data change, the contents of the StatFolio is automatically updated.

StatLog

The StatLog, automatically records the operations you have performed and any output that you choose to include. Together with the StatFolio audit trail, it provides a permanent record of your analyses.

StatPublish

StatPublish lets you publish your tables and graphs as HTML so that anyone with a web browser can quickly view your results.

StatReporter

The StatReporter lets you create reports with Statgraphics by copying and pasting tables and graphs generated in the analysis windows. You may edit the output, add additional comments, and save the results as an RTF file.

StatWizard

The StatWizard is a tool designed to help you select the proper analyses for your data. You begin by selecting the data to be analyzed. The StatWizard then suggests analyses appropriate for that type of data.

Data Visualization

- Scatterplots (2D, 3D, matrix)
- Polar and spherical coordinates
- Ternary plot
- Bubble chart
- Box-and-whisker plot
- Violin and diamond plots
- Histograms and dot diagrams
- Quantile and probability plots
- Radar/spider plot
- Heat maps
- Barcharts and piecharts
- Tornado and butterfly plots
- Dashboard gage
- Demographic maps
- Venn and Euler diagrams
- Waterfall plot
- Surface and contour plots
- Splines
- Kriging

Probability Distributions

- 51 univariate distributions
- Multivariate normal distribution
- Mixture distributions
- Distribution fitting with censored data
- Random number generation

Multivariate Visualization

- Parallel coordinates plot
- Andrews plot
- Star plots and sunray glyphs
- Chernoff faces
- Correspondence analysis
- Multidimensional scaling

Descriptive Statistics

- One variable analysis
- Outlier identification
- Nonparametric density estimators

Analysis of Categorical Data

- Tabulation and crosstabulation
- Analysis of counts and proportions
- Likert plot
- Text mining

Machine Learning

- Classification and regression trees
- Decision forests
- Support vector machines
- K-means clustering
- Discriminant analysis
- Neural networks

Time Series Analysis

- Run chart
- Component line chart
- Time series baseline plot
- Open-high-low-close candlestick plot
- Population pyramid
- Wind rose diagram
- Spiral plot
- Exponential smoothing
- ARIMA model fitting
- Automatic forecasting
- Seasonal decomposition
- X-13ARIMA-SEATS seasonal adjustment

Multivariate Analysis

- Principal components and factor analysis
- Canonical correlations
- Item reliability analysis
- Multivariate normality test

Sampling and Tests

- One and two-sample hypothesis tests
- Equivalence and noninferiority tests
- Sample size determination
- Sequential sampling

Regression Analysis

- Correlations and partial correlations
- Linear and nonlinear regression
- Box-Cox transformations
- Calibration models
- Orthogonal regression
- Polynomial regression
- Piecewise linear regression
- Comparison of regression lines
- Regression model selection
- Stability studies
- Partial least squares
- Ridge regression
- Logistic regression and Probit analysis
- Count regression (Poisson, binomial, ZIP)
- Ordinal regression
- Quantile regression
- Multinomial logistic regression

Analysis of Variance

- Oneway and multifactor ANOVA
- Factor means plot
- General linear models
- Repeated measures ANOVA
- Variance components analysis
- Multiple range tests
- Nonparametric tests
- Median polish of two-way table
- Analysis of Means (ANOM)

Life Data Analysis

- Life tables
- Weibull analysis
- Life data regression
- Cox proportional hazards
- Arbitrarily censored data
- Accelerated life tests
- Analysis of repairable systems

Monte Carlo Simulation

- General simulation models
- ARIMA time series models
- Random numbers for 43 distributions

Design of Experiments

- Screening and response surface designs
- Mixture experiments
- Computer generated designs (D, A, I, G)
- Robust parameter designs
- Definitive screening designs
- Alias optimal designs
- Taguchi orthogonal arrays
- Screening design selection
- Prediction variance plots
- Response surface and contour plots
- Interactive response surface explorer
- Trellis plots
- Multivariate optimization
- Design augmentation
- DOE wizard

Statistical Process Control

- Control charts (33 types)
- Process capability analysis for variables
- Process capability analysis for attributes
- Gage R&R studies
- Statistical tolerance limits
- Acceptance sampling plans
- Pareto analysis
- Multi-vari charts
- QFD matrix
- Reliability demonstration test plans
- Sample size selection – tolerance limits
- Sample size selection – capability indices
- Control chart design
- Six sigma calculator
- Automated alerts

Tools

- StatFolios for saving projects
- StatAdvisor for interpretation
- StatGallery for overlaying plots
- StatReporter for document creation
- StatWizard to assist in selecting analyses
- StatLog for recording session
- StatLink for connecting to databases
- Dashboard for real time monitoring
- Statlets for interactive dynamic visualization

Advanced process capability analysis

Artificial intelligence

Big data analytics

Cloud computing

Complete online documentation

Customization

Distribution fitting

Equivalence and noninferiority testing

Machine learning

Modern data visualization

On site & online instruction services

Python interface

R interface

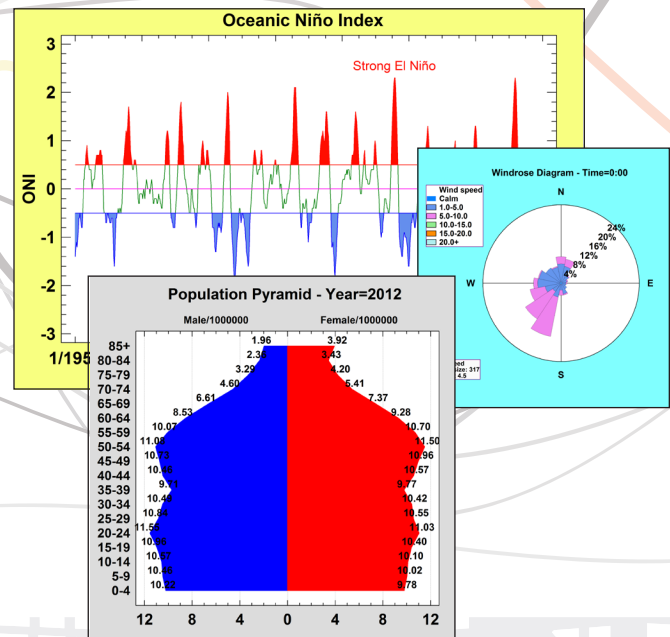
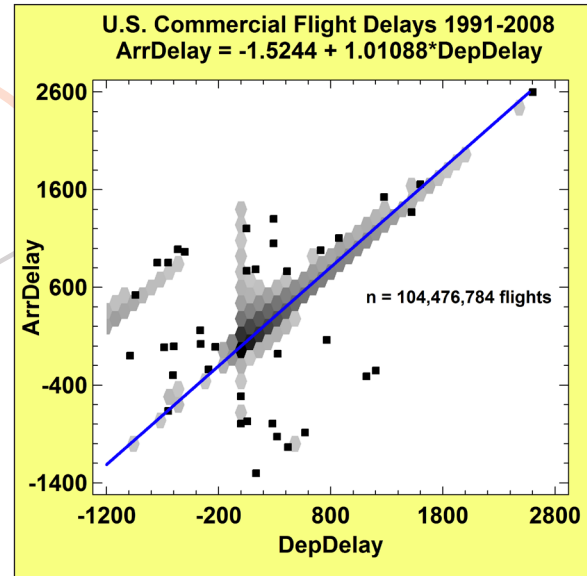
Regression & analysis of variance

Specialized training videos

Statistical tests

Technical support

Text mining



For full details on any of our products, go to:

www.statgraphics.com

STATGRAPHICS TECHNOLOGIES Inc.

PO BOX 134

The Plains, VA 20198

p: 540-428-0084

f: 540-428-0089

info@statgraphics.com

SYSTEM REQUIREMENTS

Windows 7 or later • 32-bit Systems:

1 GB minimum, 2 GB or more recommended; 64-bit systems:

4 GB or more recommended • 520MB or greater of available

disk storage • CD-ROM drive or access to Internet